

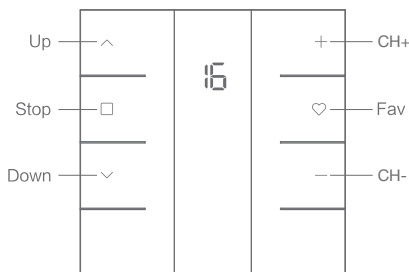
# JCHR35W5C2/C3

## Remote Controller

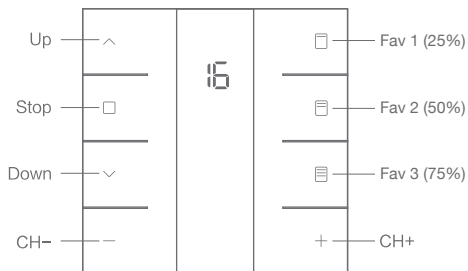
### User Manual

#### 01 Product Info

a.Front

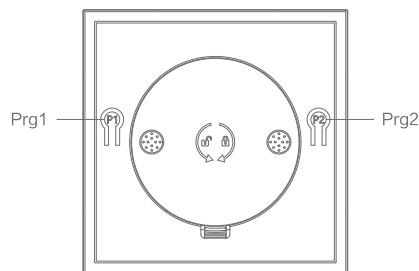


JCHR35W5C2  
16-channel LCD remote controller



JCHR35W5C3  
16-channel LCD remote controller

b.Back



JCHR35W5C2/C3

#### 02 Models & Parameters (more info please refer to the nameplate)

Electrical Specification	Standard
Battery Type	CR2430*3V*2
Working Temperature	-10°C~50°C
Radio Frequency	433.92M ± 100KHz
Transmit Distance	>=30m indoor

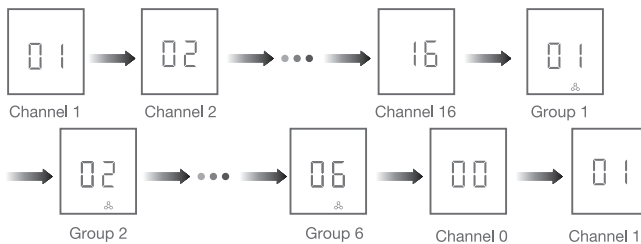
#### 03 Caution!



1. The transmitter should not be exposed to moisture or impact, so as not to affect its life
2. During use, when the remote control distance is significantly shorter or less sensitive, please check whether the battery needs to be replaced.
3. When the battery voltage is too low, the LED screen will show a low voltage prompt, indicating to replace the battery.
4. Please properly dispose of used batteries according to the local garbage classification and recycling policy.

#### 04 Instructions

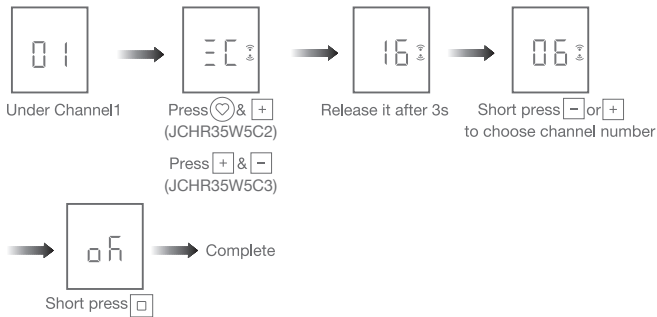
##### a.Channels & Groups Toggling



or To toggle  
Short Press

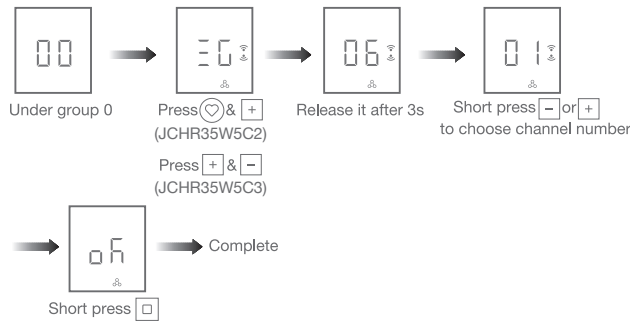
Note: Channel 0 is the group control for all the channels.

### b.Number of Channels Setting



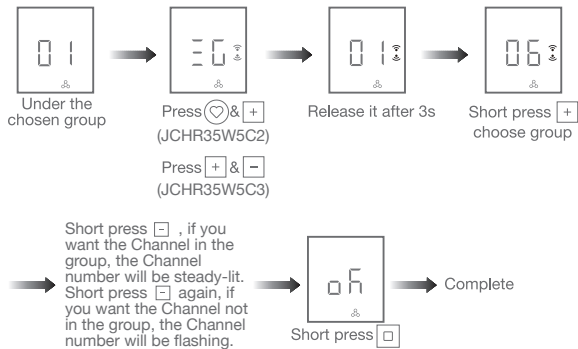
Note: Max&Min number is 16&1 when it's set under channel 1-16.

### c.Number of Groups Setting



Note: Max&Min number is 6&0 when it's set under channel 0.

### d.Channel in Group Setting



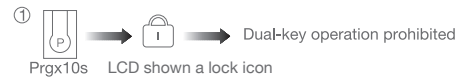
Note: Channel in groups setting is under GROUP 1-6.

### e.Check the Channels in Groups



Note: LCD will show "EC" if there is no detailed channel.

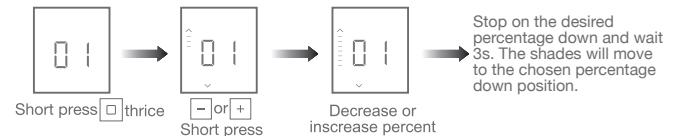
### f.Prohibit Dual-key Operation



② Repeat the above, dual-key operation activated

Note: When dual-key operation prohibited, these programming setting functions are not allowed, such as limits setting.

### g.Position Percent Setting



Note: All the shades under same group will run to same position after percent setting.

### h.Special operation on remote controller JCHR35W5C3:

- ① CH+ & Up: Upper limit set
- ② CH+ & Down: Lower limit set
- ③ CH+ & Stop: Favorite position set
- ④ Press the "CH+" button for 2s to fast get to the Fav. point

### i.For other operations, please refer to the motor operation instruction