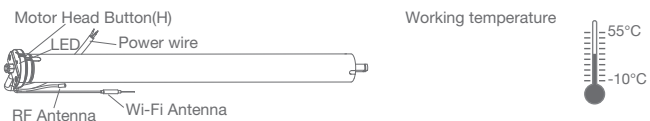
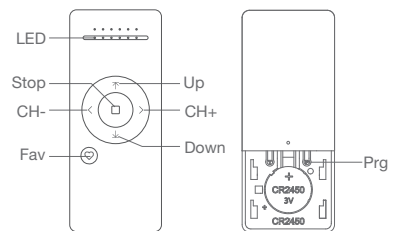


# AC Electronic Wi-Fi Tubular Motor User Manual

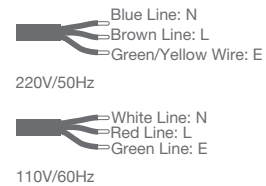
## 01 Product Info



### Remote Controller Buttons



### Power Options



### Models & Parameters (for details about other parameters, see the product nameplate)

JCA	35	S	E	100	17	W
AC Motor	Tube Diameter: 35 mm	S: Standard	E: Electric limit 230V/50Hz EL: Electric limit 110V/60Hz	Torque: 10 N.m	Speed: 17 Rpm	Built-in Wi-fi module

## 02 Caution!



- The power supply is AC supply.
- Please confirm the rated voltage and frequency according to the nameplate when using it.
- The motor will jog in operation, please do not proceed to the next step until it complete.
- During operation, the effective interval of the transmitter button operation is 10 seconds. If there is no effective transmitter operation for more than 10 seconds, it will automatically exit the current mode.
- The motor can be paired with max 10 controllers.
- Upper&Lower limits cannot be set at the same position, limits saved even power off.
- The motor runs constantly for at 6mins max without any other operation.
- Do not lift the motor by grabbing the wire or antenna.

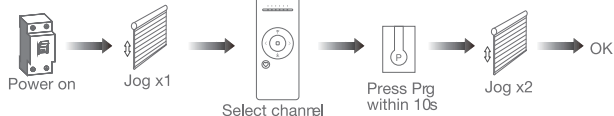
## 03 Instructions

### Motor head button (H) functions

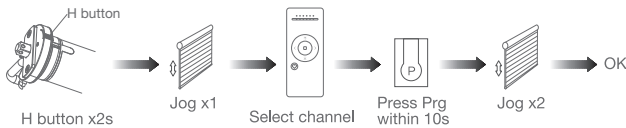
Functions	Operation	Jogging time	Note
Control the UP/STOP/DOWN of the Shade	Short press	/	Can only operate after the limits are set
Adding/Removing Controller	Hold for 2s	Jog*1	Operation needs be done within 10s
Wi-Fi Connecting	Hold for 6s	Jog*2	Entering Wi-Fi connection mode
Direction Reverse	Hold for 10s	Jog*3	All settings saved after direction reversed
Reset	Hold for 16s	Jog*4	All settings deleted

### a.Pairing Motor with Controller

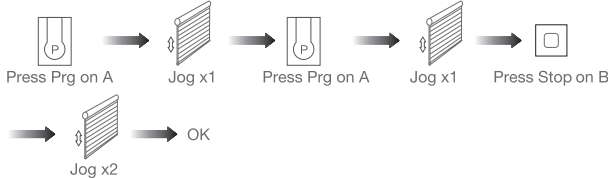
#### Way 1: Before adding a new controller



#### Way 2: After motor is powered on for more than 10s

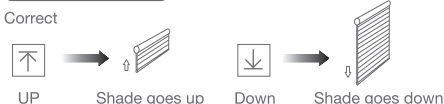


#### Way 3: Power on, add controller B via pre-existing controller A

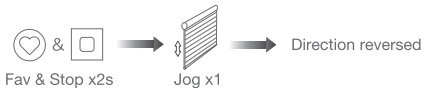


Note: Pairing can not be done under group channel or 0 channel.

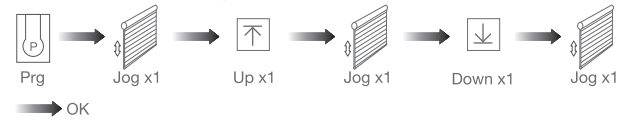
### b.Direction Reverse



If the limits are not set, and direction goes opposite.



If limits are set and direction goes opposite.



Note: Do reverse the direction when it goes opposite.

### c.Upper&Lower Limits Setting



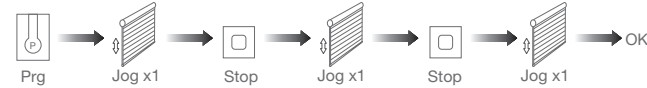
Note: Upper&Lower limits cannot be set at the same point.

Before limits set, the motor will run in one-touch mode by pressing Up or Down, hold Up or Down for 2s, motor runs in constant-touch mode.

Once limits set, press Up or Down, motor runs in constant-touch mode.

### d.One-touch/Constant-touch Mode

Constant-touch ----->One-touch



Same operation can toggle from one-touch to constant -touch mode.

Note: When motor in one-touch mode, hold Up or Down for more than 2s, it will run in constant-touch mode.

### e.Setting and Cancelling Favorite Position

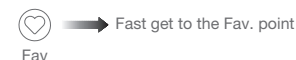
#### Setting



#### Cancelling



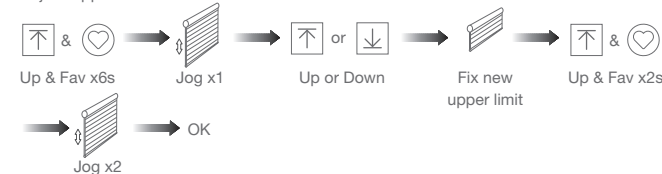
### f.Hot key to the Fav. Position



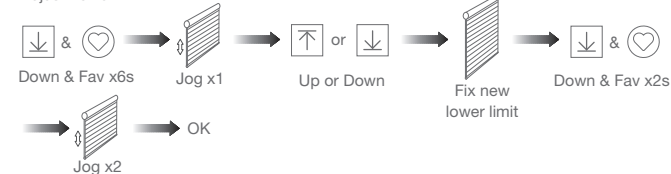
Note: The Fav.position setting only can be done after upper&lower limits set.

### g.Adjusting Upper & Lower Limits

#### Adjust Upper limit



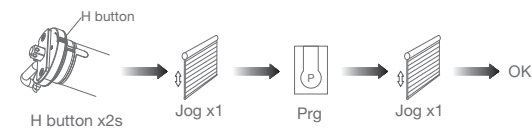
#### Adjust Lower limit



Note: The operation should be done within 4mins.

### h.Removing Controllers

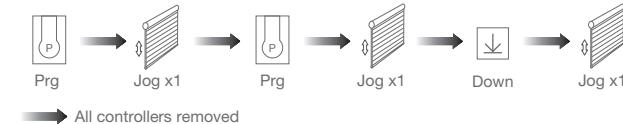
#### Remove a single controller



#### Remove controller B via pre-existing controller A

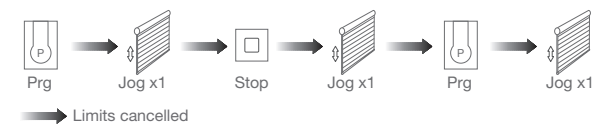


#### Remove all controllers:



Note: All the settings are saved even controllers removed(limits set are saved). Controller A/B are already paired to motor.

### i.Cancelling Limits



Note: It is forbidden to run the motor if installed into the shade without limits. Limits should be set immediately to protect the shade.

## 04 Connecting to Wi-Fi network

### \*Connection requirement

The smart phone needs to connect to Wi-Fi network and turn on the Bluetooth function first.

#### 1 Download APP

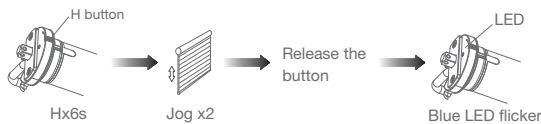
a. Search for "Smart Life" in the app store or scan the QR code



b. Complete account registration and login to the app

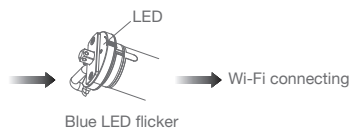
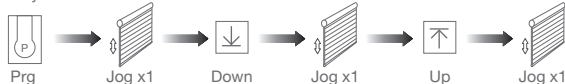
c. Operate the motor to enter Wi-Fi network connection mode:

Way 1

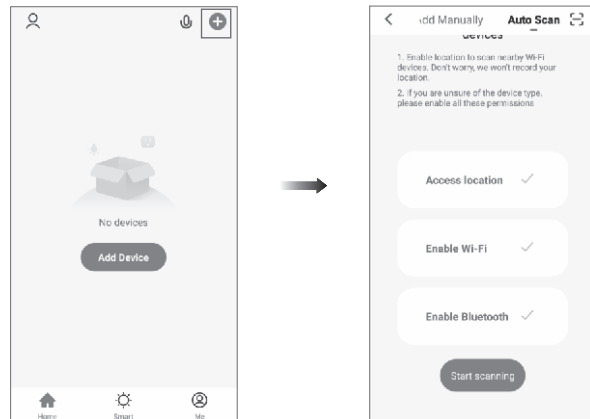


→ Wi-Fi connecting

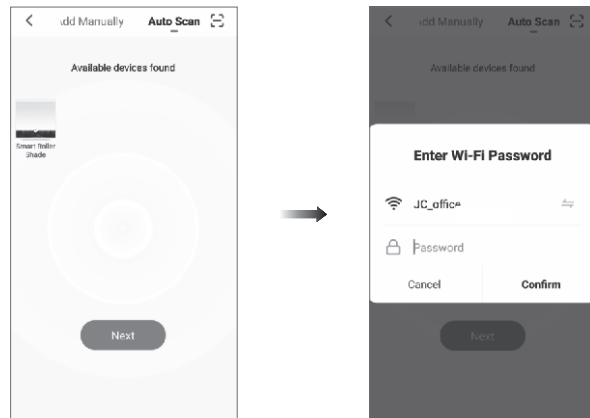
Way 2:



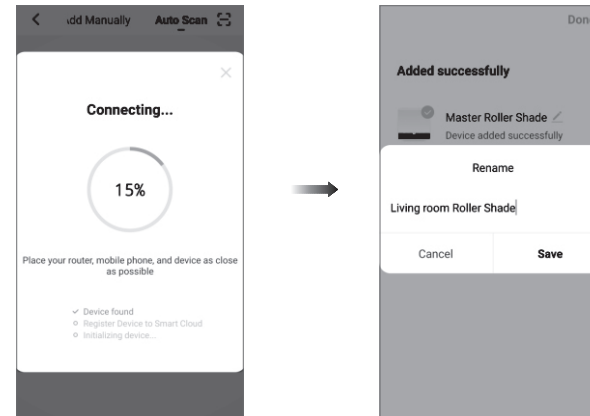
d. Click "+" in the upper right corner of the APP, then click "Auto Scan", the APP will automatically search for tubular motor



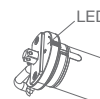
e. Click "Next" when you find the device, enter the Wi-Fi account password and click "Confirm" to connect.



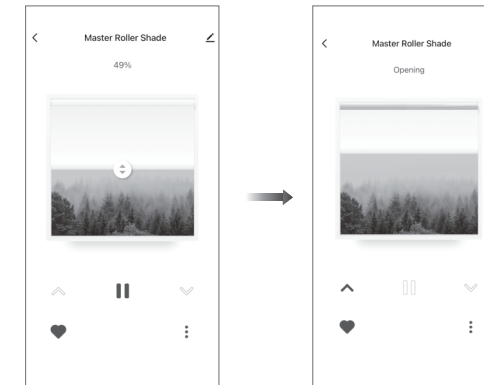
f. After adding device successfully, tap "✎" after the device name to modify the device name.



g. After the motor device is added successfully, the LED on motor head will be on for 10s and then go off.



h. Now the motor can be controlled by App from anywhere, anytime



## 05 Troubleshooting

Fault	Cause	Solution
The motor does not run or start slowly	1.Low voltage 2.Wrong wire connection 3.Overloading 4.Wrong installation	1.Adjust the voltage to rated data 2.Correct the wire connection 3.Put the suitable weight for roller shade 4.Reinstall the tubular motor
The motor suddenly stop	The motr has exceeded termal overheat protection (4 minutes)	Wait for the motor to cool down for approximately 20 minutes
The motor makes a strange noise when it runs	1.The crown and drive adapter are not well adapted to tube 2.The driving tube is too long, cused the brackets are too tightly	1.Change correct size crown and drive adapter 2.If idler is active, make driving tube shorter to avoid the tight status